

Designing Sustainable Landscapes in the Northwest Boreal Region

Amanda Robertson, Coordinator,
NWB LCC,
Amanda_Robertson@fws.gov

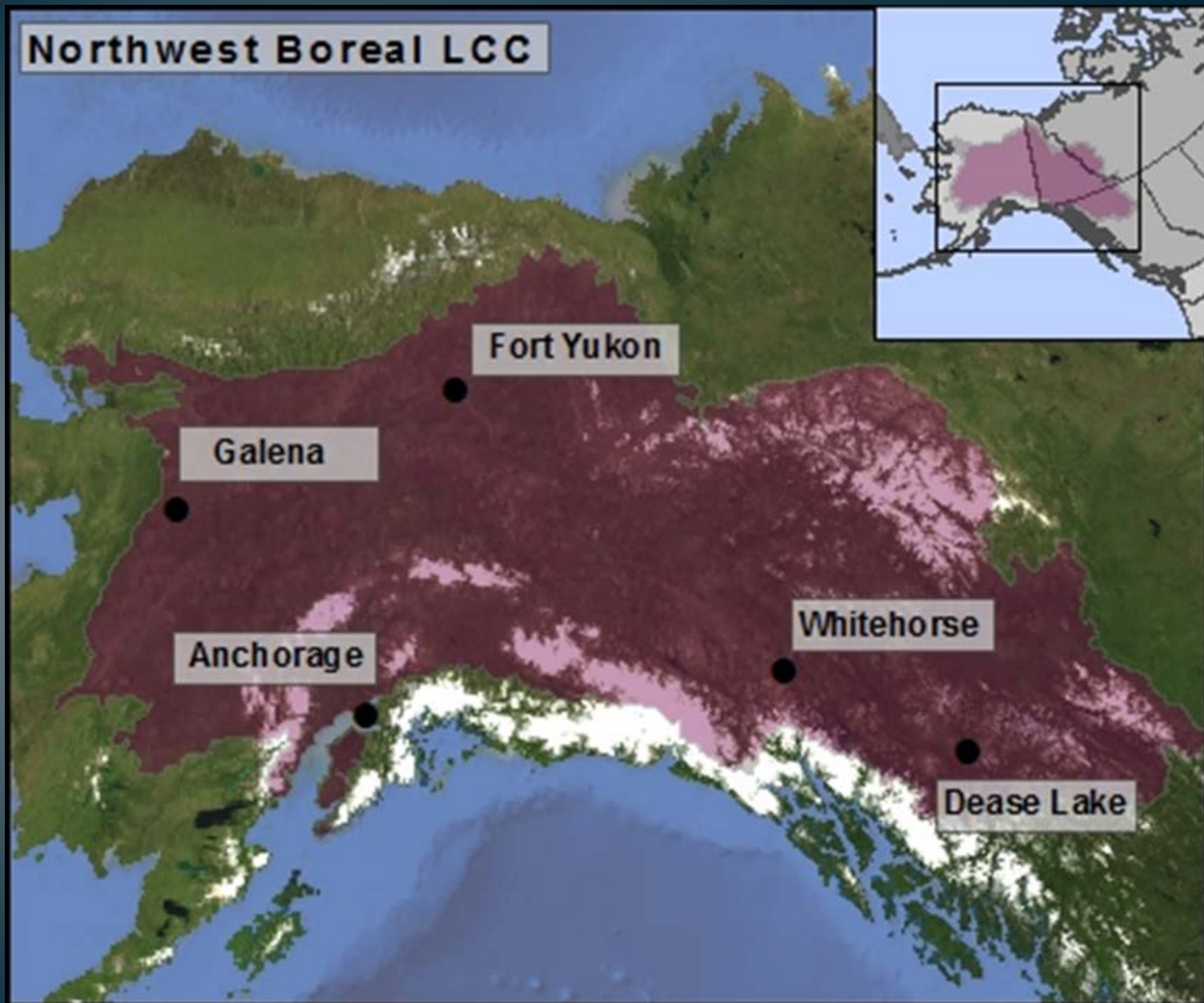


NORTHWEST BOREAL
Landscape Conservation Cooperative



**LANDSCAPE CONSERVATION
COOPERATIVES**

Northwest Boreal LCC





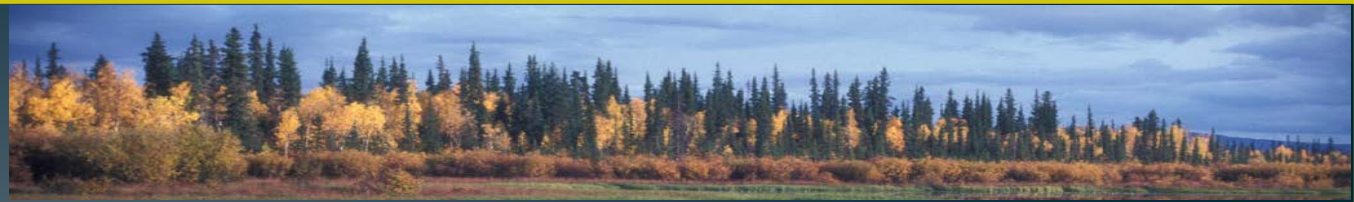
US Army Corps
of Engineers®



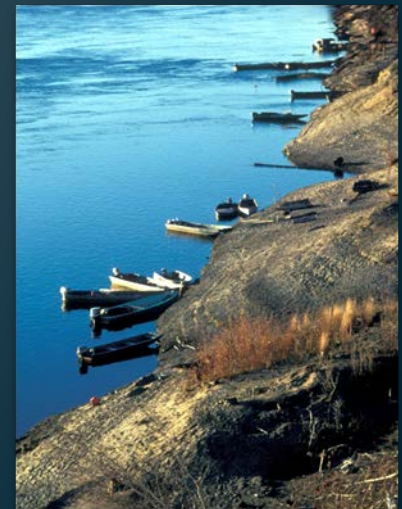
Tanana
Chiefs
Conference



Northwest Boreal LCC

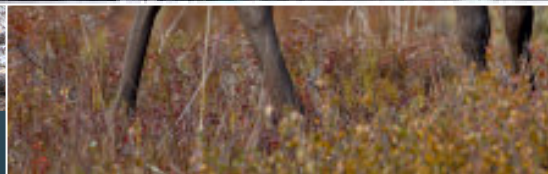
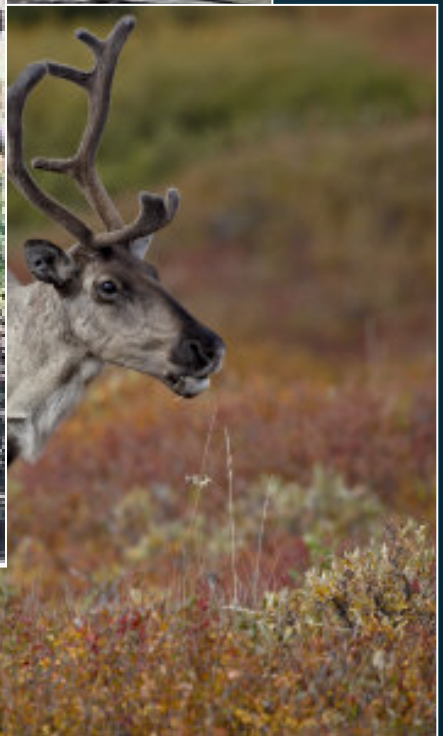
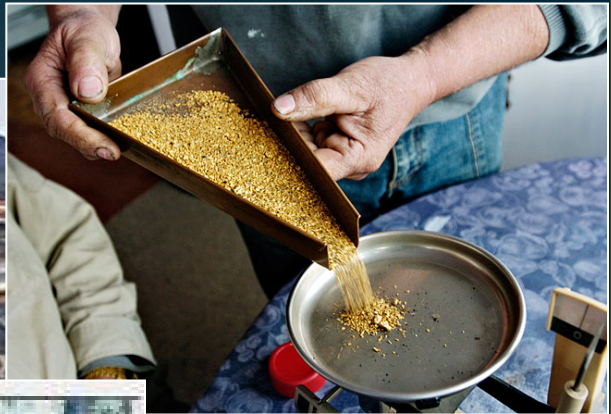


- **Vision:** A dynamic landscape that maintains functioning, resilient boreal ecosystems and associated cultural resources.
- **Mission:** To enhance the ability of organizations and communities to understand, manage, and adapt to our changing landscape



Northwest Boreal LCC: Land of Opportunity





Ecosystem Stewardship

- Ecosystem Stewardship uses *proactive strategies to shape future conditions* to sustain ecosystem services and support human well-being
- Proactive = **planning for future social-ecological changes before they occur**
- Change is the only constant

Reactive vs. Pro-active Planning



Managing Scarcity



Maintaining Integrity

NWB LCC Strategic Plan



NORTHWEST BOREAL
Landscape Conservation Cooperative



Wetland within Devil's Elbow Habitat Protection Area, central Yukon
Photo: Ducks Unlimited Canada

Strategic Plan

2015 - 2025

Version 1.0

The Strategic Plan is organized into four Themes:

- I. Working Together
- II. Informing Landscape Conservation
- III. Communication
- IV. LCC Management

The four Themes describe the primary functions identified for the NWB LCC. Goals within each Theme derive from the NWB LCC Vision. Objectives describe how we can reach those goals, and the actions are individual strategies designed to meet our objectives. Each action listed is “SMART,” defined as follows:

- S - *Specific*
- M - *Measurable*
- A - *Agreed upon*
- R - *Realistic*
- T - *Time bound*

II. Informing Landscape Conservation Theme

Issue Statement

*The mission of the NWB LCC is to enhance the ability of organizations and communities to understand and manage ecosystems and their processes in our changing landscape. The partnership will do this by identifying, developing, and supporting shared conservation goals that will help us reach our vision, and by promoting coordination, development, and dissemination of science and traditional ecological knowledge to inform and incentivize landscape-level sustainability. By taking a proactive approach to conservation, the LCC will provide the tools and information necessary to work collectively towards our shared vision in the face of an uncertain future. The LCC's goals in this Theme are inherently linked and iterative (**Figure 2**), and will be updated and revised as new information becomes available and as the partnership diversifies.*

Goals

- 1. Identify, develop, and support shared landscape conservation goals to guide the partnership in achieving the vision of NWB LCC.**
- 2. Build a landscape conservation foundation for NWB LCC.**
- 3. Identify trajectories of change - What does the future hold for the NWB region?**
- 4. Understand social-ecological relationships within the NWB LCC.**
- 5. Coordinate and support conservation delivery across the NWB LCC partnership.**

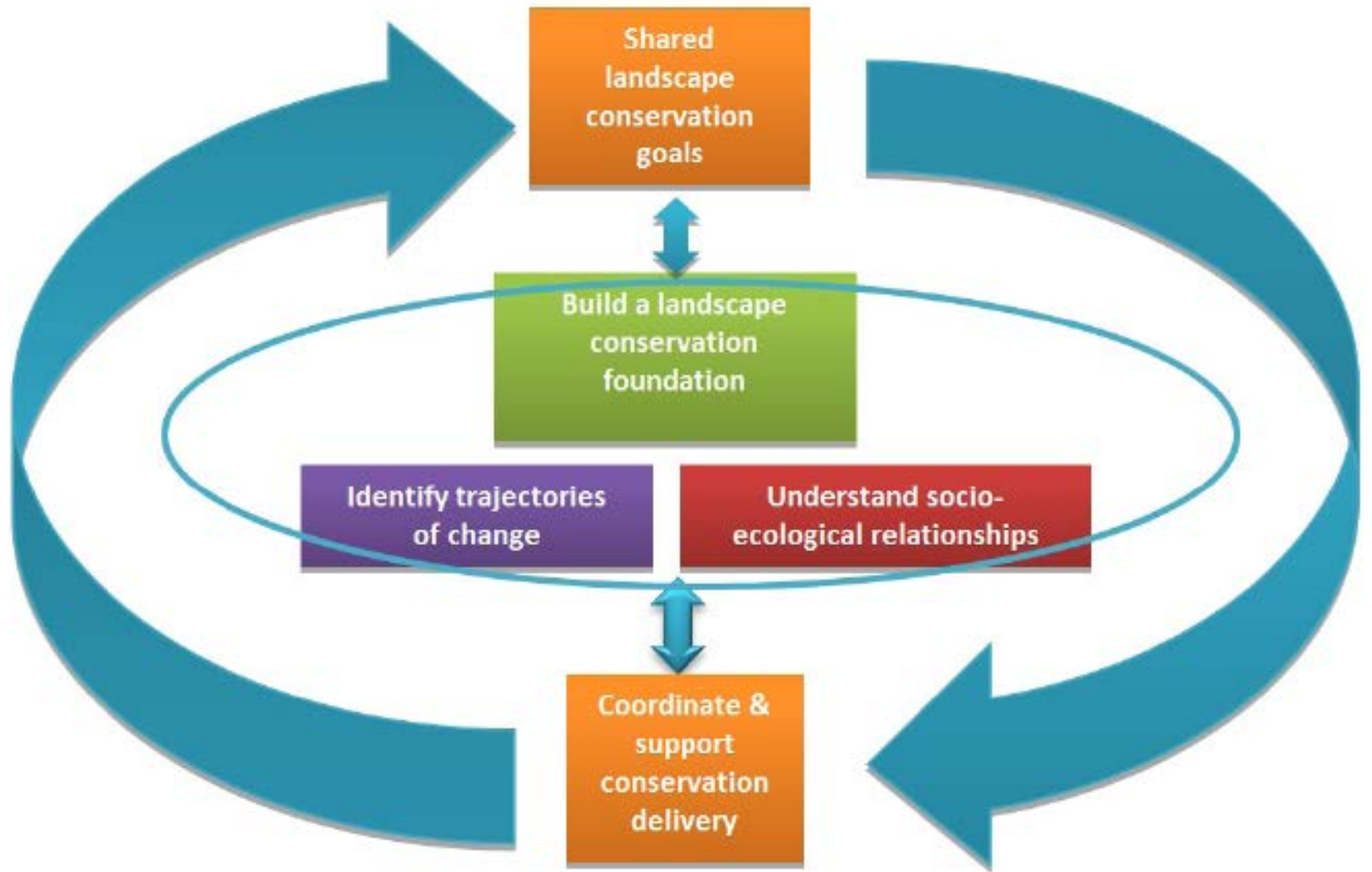


Figure 2. The five goals in the *Informing Landscape Conservation Theme* inform one another in an adaptive cycle.

Setting shared landscape conservation goals



Dawson City, Yukon August 2016

Key Considerations

- Resilience
- Intactness
- Respect
- Recognize dynamic systems
- Desired future condition
+ future range variability
- Benchmarks, timeframes
- Stewardship

	ACTIONS	OUTCOMES
ECOLOGICAL	1, 3, 4	2
SOCIAL	9	7
SOCIAL- ECOLOGICAL	5, 6, 8, 11, 13	10, 12

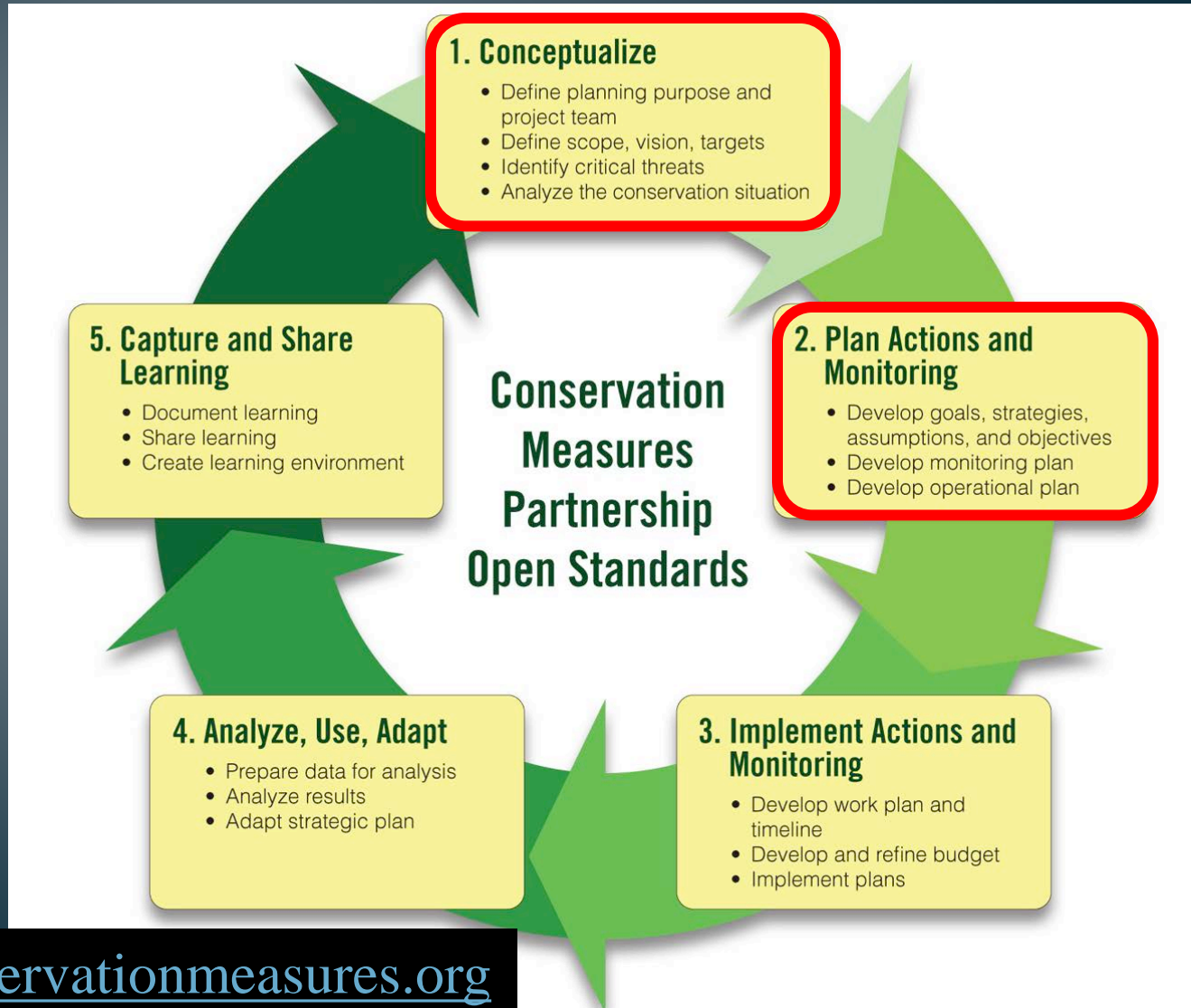
Northwest Boreal LCC



- Goal 1: Northwest Boreal landscapes and watersheds remain intact and connected (structural)
- Goal 2: The Northwest Boreal sustains biodiversity and ecosystem services (functional)
- Goal 3: The collective stewardship of Northwest Boreal supports a full range of cultural, economic, environmental, recreational, and spiritual values

- How do we get from broad goals to measurable outcomes??

Open Standards for the Practice of Conservation



Since we already had our goals....

- Goals = Conservation Targets
- Started with Situation Analysis (Conceptual Model)
- Results Chains
 - Strategy Development
 - Measurable Objectives
 - Actions
- Open Standards Light

Group 3
Collective Stewardship
of NB Supports full range
of Cultural, economic,
Environmental, Recreational,
& Spiritual Values

Adaptive
Planning

Whiteboard with various sticky notes in blue, pink, and yellow.

Yukon Research Centre Northern Climate ExChange

Table with meeting materials including sticky notes, notebooks, and name tags. Name tags include:
- Geoff [unclear]
- Jamie Arroyo
- Kelly Donnelly

Clyde

Group 2: NB sustains biodiversity & Ecosystem Services

Who does this

Support + engagement of all interests.

Collaborative process for comprehensive LUP

Transitions we influence this

Sustainable resource use
Effective resource system

No loss due to destruction or alteration due to human activities
Natural ecological processes are maintained

Conserve full range of ecological conditions

Resilience to climate change

Integrate protection

Have recovery

- Role

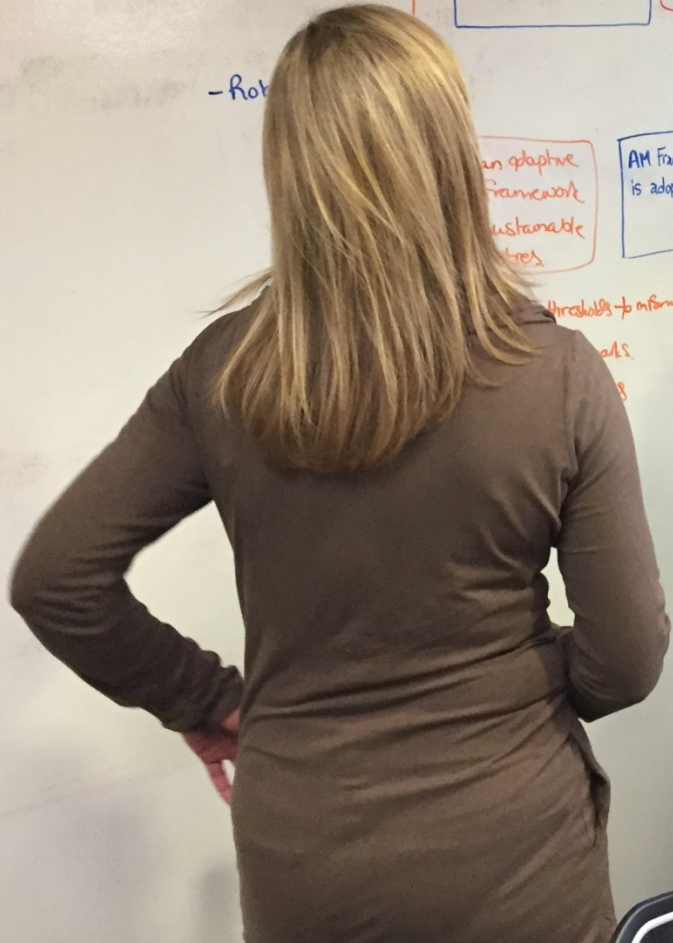
An adaptive framework for sustainable resources

AM Framework is adopted

Threats to inform input



acing
th
ime
ities.





Yukon Research Centre
Tech
Inno

partn
research

Technology
development of comm
contribute to the social and eco

making y
ideas

logy Inno
RCH CENTR

TARGETS
Ultimate
Results
Act



Outreach, research
facilitate dialogue

Support
engagement
all inter

Next steps

- Continue to develop results chains
- Look for commonalities (actions) across all or most strategies
- Prioritize near and long-term actions
- Funding

Questions?



NORTHWEST BOREAL
Landscape Conservation Cooperative