



Steering Committee Meeting

Anchorage, AK
November 3, 2014





- ✓ **National Happenings**
- ✓ **NPLCC grounding**
- ✓ **2014 reminder of commitments and actions**
- ✓ **2015 priorities**





LANDSCAPE
CONSERVATION
COOPERATIVES



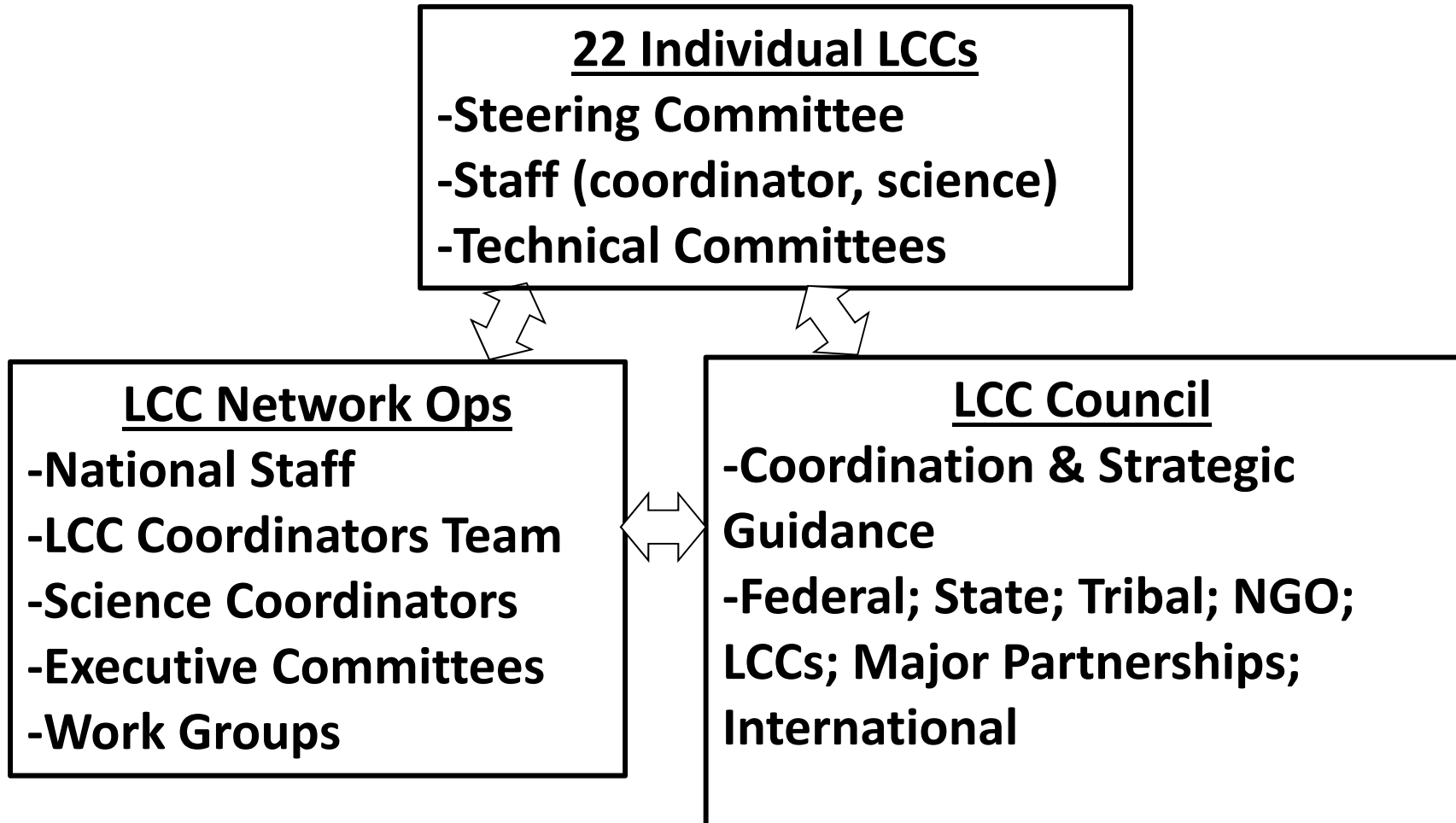
Network Strategic Plan

- 5-year look
- Identifies goals, objectives
- Builds on existing work
- Path for achieving the LCC Network's vision and mission
- Identifies goals, objectives, and example tactics
- Focus Areas: conservation strategy, collaborative conservation, science, and communications.





LCC Network Organizational Structure





LANDSCAPE
CONSERVATION
COOPERATIVES

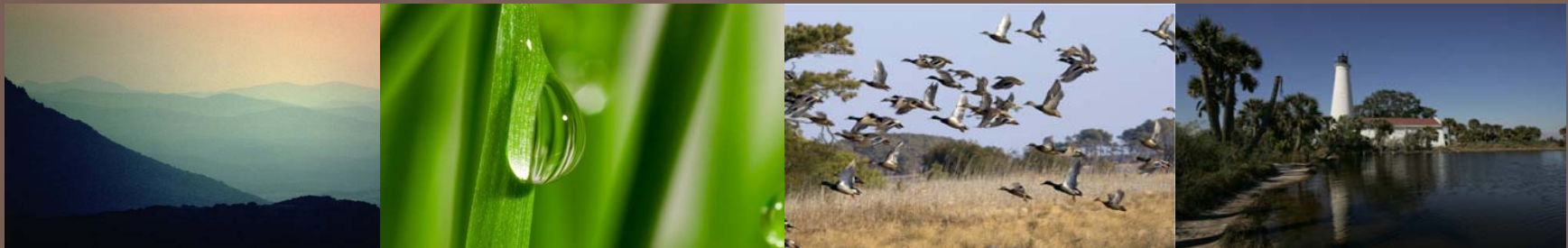


Other Network News

- LCC Network Annual Report
- National Academy Committee appointed
- Large Landscape Conference
- Fish, Wildlife, Plants, Climate Adaptation Strategy, impl. report
- Funding
- LCC Council



Landscape Conservation Cooperatives



lccnetwork.org



Who?

- ✓ 2 Countries
- ✓ 200+ Tribes and First Nations
- ✓ 4 States, 1 Province, 1 Territory

Where?

- ✓ Entire range of Pacific Coastal Temperate Rainforest (>2,200 miles)
- ✓ Terrestrial & Freshwater Aquatic Ecosystems
- ✓ Adjacent Marine Ecosystems (shorelines, estuaries, nearshore)
- ✓ 78% public lands

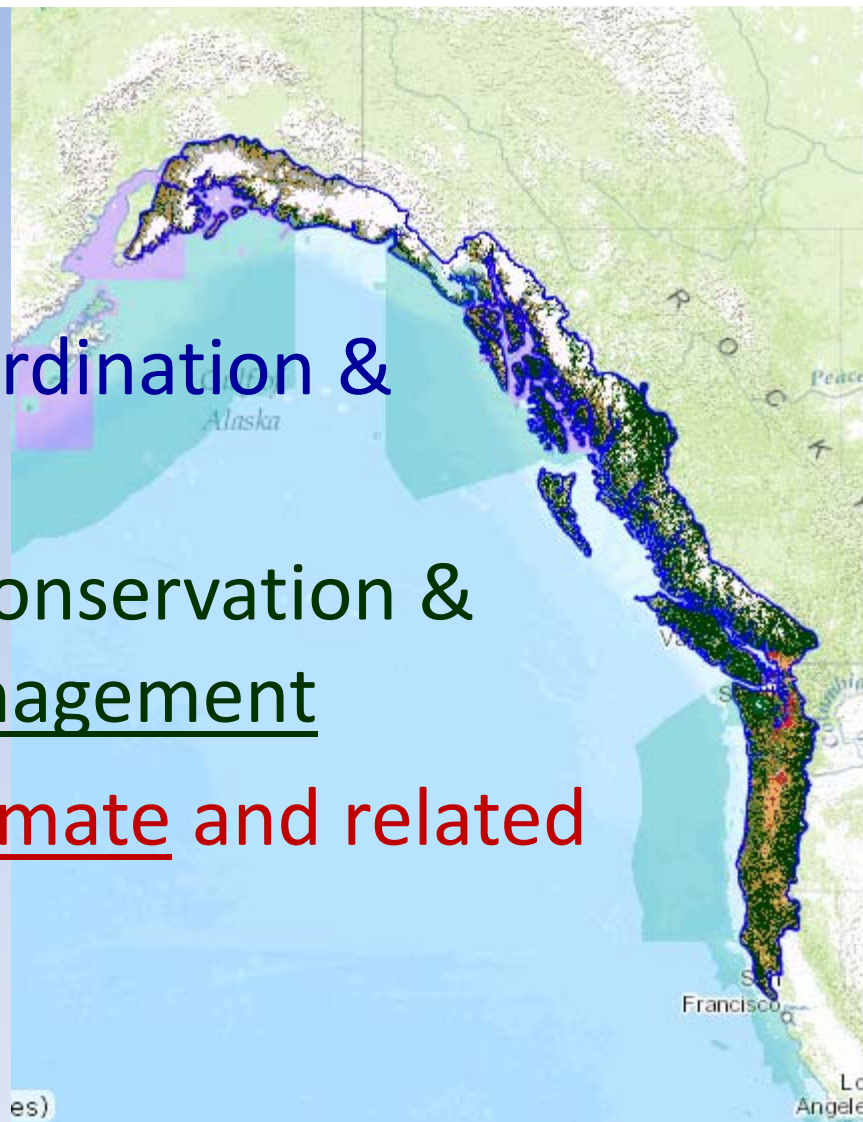
Why?

- ✓ Face larger-scale challenges with shrinking fiscal resources
- ✓ Common natural & cultural resources, stressors
- ✓ Establish a Community of Practice



NPLCC Mission:

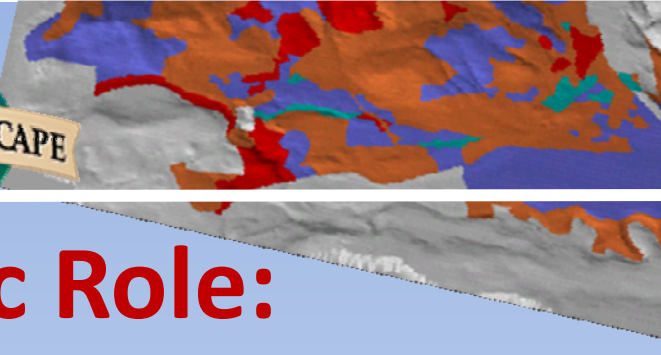
Promote development, coordination & dissemination of science to inform landscape-level conservation & sustainable resource management in the face of a changing climate and related stressors.





Seven Goals:

1. Maximize ability resource managers make informed decisions given climate change and related stressors
2. Identify and address transboundary, landscape-level natural and cultural resource needs
3. Identify priorities for applied science and other information for conservation/sustainable resource management; coordinate efforts with science centers
4. Maximize availability and accessibility of data & information about large-scale stressors, impacts to natural & cultural resources, management options
5. Promote identification, use and sharing of science, traditional ecological knowledge, other relevant information
6. Promote coordination and efficiency of efforts
7. Promote awareness of effects climate change on environment, cultures, economies



Strategic Role:

- Convene Partners and assess regional science/information needs
- Fund Strategic Projects to advance conservation
- Build Capacity to adapt to change
- Communicate & Share Information



Advancing Landscape-Scale Conservation

An Assessment of Climate Change-Related Challenges, Needs, and Opportunities for the North Pacific Landscape Conservation Cooperative

Patricia Tillmann* and Dan Siemann*
National Wildlife Federation

Funded by the North Pacific Landscape Conservation Cooperative

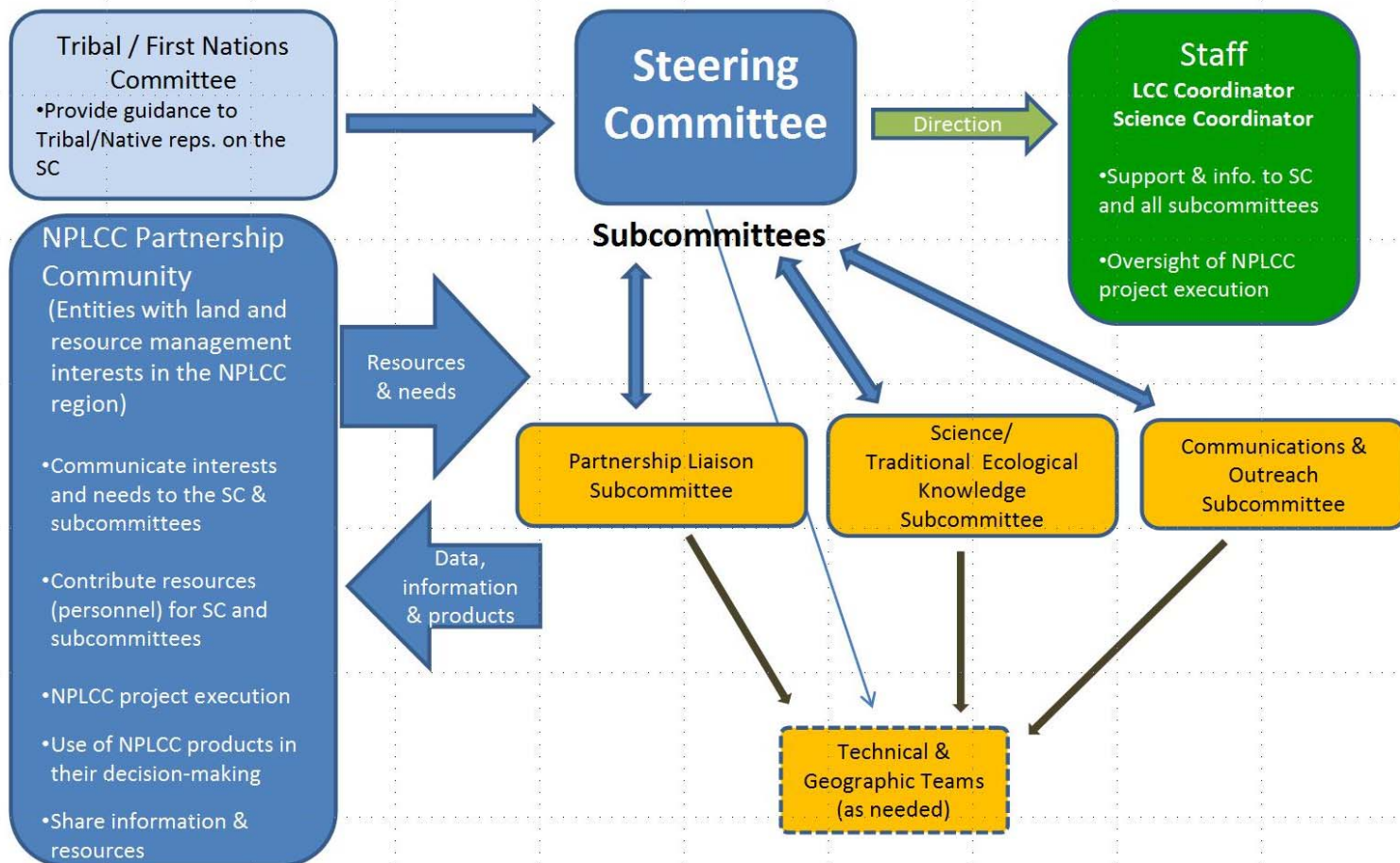
December 2012





Organizational Structure

North Pacific Landscape Conservation Cooperative





Steering Committee Entities

5 Tribes & First Nations

AK, BC, WA,
OR, CA

Federal

FWS, USFS,
BLM, NOAA,
NRCS, EPA,
NPS, USGS, BIA
CWS, DFO



State/Provincial

4 States (AK, WA, OR, CA)
British Columbia

Partnerships:

Pacific Coast J.V.

Science Orgs:

CSC (AK, NW, SW)
NOAA RISAs
Pac. Climate Impacts Con.



North Pacific Landscape Conservation Cooperative

**Annual
Implementation**

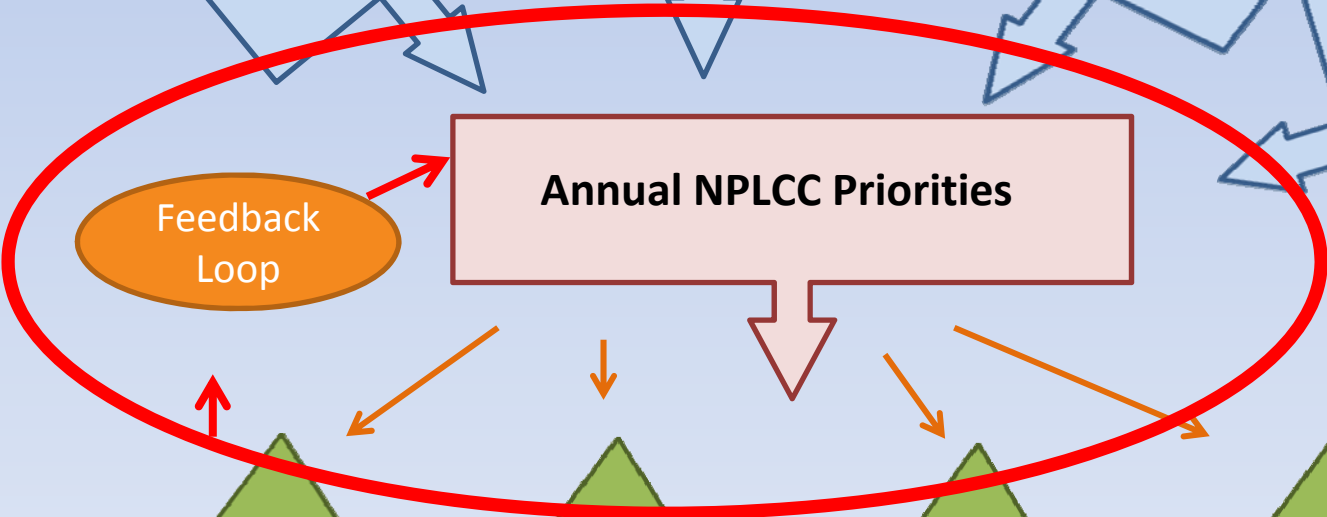
**Overall Direction
Mission, 7 Goals, Charter**

**5-Year
Science/TEK
Strategy
(Dec 2013)**

**5-Year
Comm. Strategy
(Feb 2013)**

**Tribe/FN Actions
(Sep 2014)**

**Partnership
Engagement
(Feb 2014)**

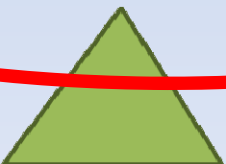


Annual NPLCC Priorities

**Feedback
Loop**



Projects



Workshops



Trainings



Partnerships



Feedback Loop: Questions to Consider

1. Do you have a good understanding of NPLCC work and why we are doing it?
2. Are we supporting work that is relevant to natural and cultural resource management decisions of your organization?
3. How can we better meet the needs of your organization?
4. In what ways have we already made a difference? How do we measure it?
5. What are some strategic opportunities over the next year to make to increase the impact of our partnership?





Tribe/First Nations Committee

- Leaders - Eric Morrison, Terry Williams, Joe Hostler, Preston Hardison, David Redhorse, Don Sampson
- Agenda:
 - Forum share experiences working on climate change, TEK, and NPLCC.
 - Learn about the NPLCC and other support for Tribes and First Nations.
 - Discuss safeguards and appropriate use of TEK.
 - Share experiences of how climate change is impacting resources ways to address impacts, including adaptation strategies & practices.
 - Provide recommendations for better engagement



Tribe/First Nations Committee

- September 4, CRITFC
- 32 participants
- Limited staff
- Highlights





10 Key Recommendations:

- Hold an annual NPLCC T/FN Committee meeting.
- Support a tribal climate change forum.
- Liaison between tribes and scientists working outside of tribes.
- Provide consistent, fair funding for climate change work.
- Support ecosystem-based measures and protection and restoration of cultural resources.
- Support on-the-ground projects.
- Integrate and refine the policy language discussed during the meeting into the NPLCC mission, structure, and procedures.
- Develop quantitative measures of the impact of these meetings.
- Develop a white paper on approach for other LCCs
- Increase outreach to First Nations.

S/TEK Report; COR Report



Partnership Engagement

- Action Plan approved in Feb 2014
- Objectives established; aligned with LCC Goals
- “Partners” defined
- Database of potential partners built
- Questionnaire form developed to document results, conduct assessment
- Limited interviews have been conducted (WFPA, WA Env'tl. Council; Capital City Land Trust, Oregon Watershed Enhancement Board, WA IAC, Coquille Tribe)



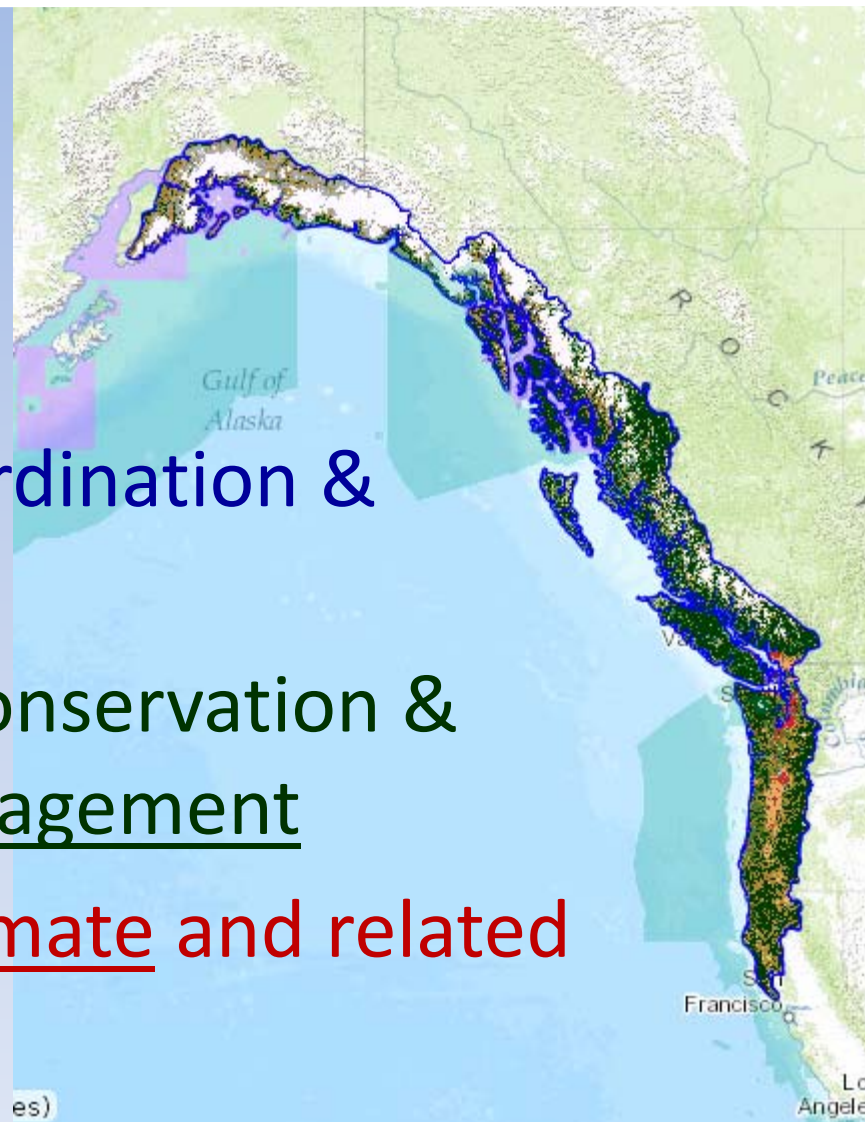
Next Steps:

1. Schedule Interviews; capitalize on coincidental gatherings
2. Invite/Involve SC members with working relations with interviewees
3. Compile results, make staff recommendations
4. Share results and staff recommendations to Partnership Working Group
5. Partnership Working Group provide briefing and recommendations to SC for action



NPLCC Mission:

Promote development, coordination & dissemination of science to inform landscape-level conservation & sustainable resource management in the face of a changing climate and related stressors.





Seven Goals:

1. Maximize ability resource managers make informed decisions given climate change and related stressors
2. Identify and address transboundary, landscape-level natural and cultural resource needs
3. Identify priorities for applied science and other information for conservation/sustainable resource management; coordinate efforts with science centers
4. Maximize availability and accessibility of data & information about large-scale stressors, impacts to natural & cultural resources, management options
5. Promote identification, use and sharing of science, traditional ecological knowledge, other relevant information
6. Promote coordination and efficiency of efforts
7. Promote awareness of effects climate change on environment, cultures, economies